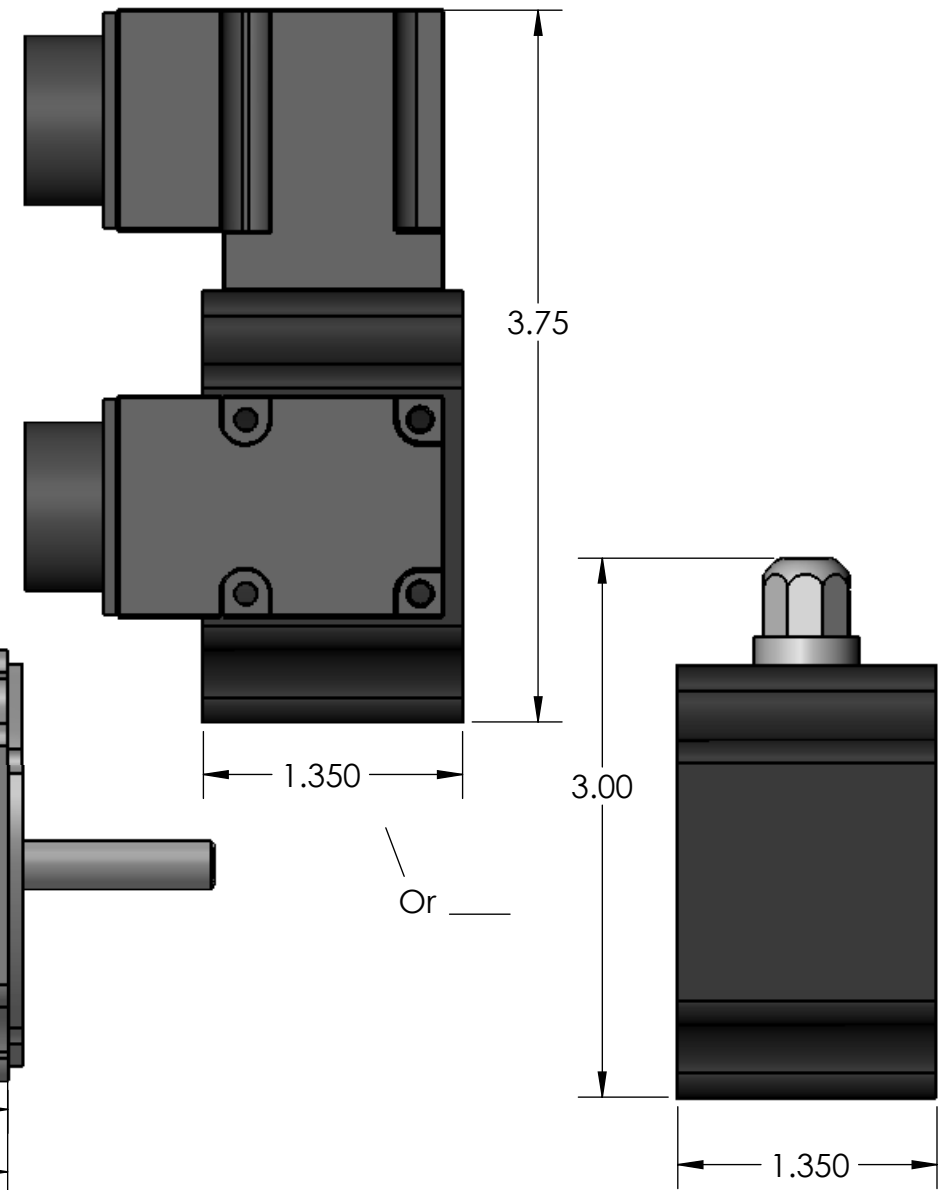
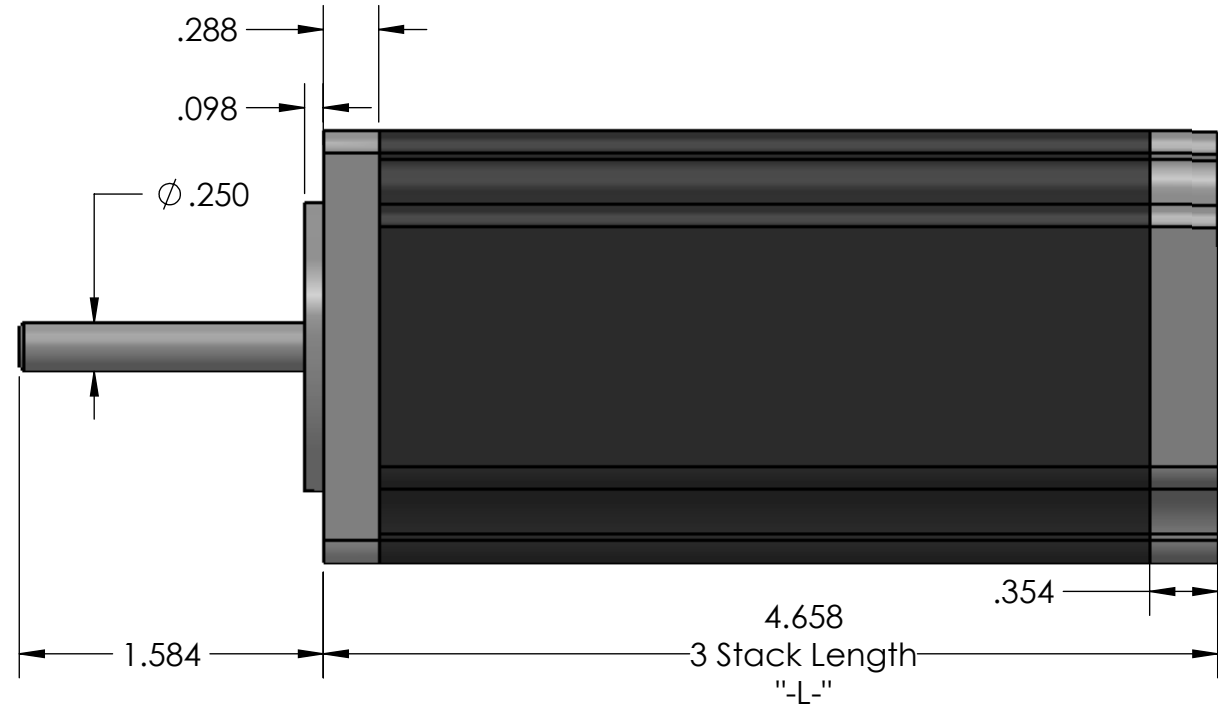
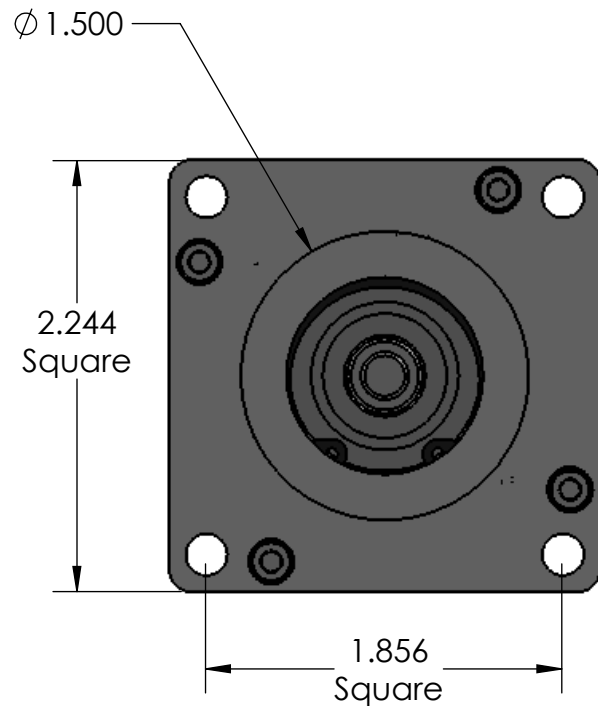
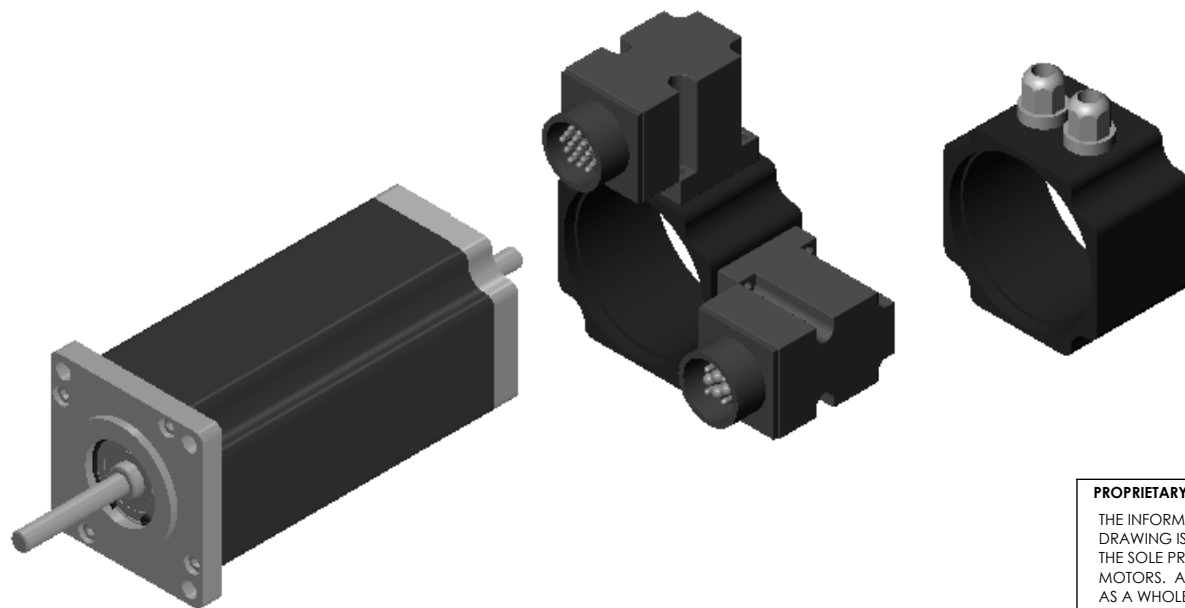


Motor Length	
Stack Size	"-L-"
1 Stack	2.335
2 Stack	3.673
3 Stack	4.658
4 Stack	5.647



Optional Feedback Connection:
 Flying Leads with Cable Gland Strain Relief
 Military Connection with Solid "Doghouse"



PROPRIETARY AND CONFIDENTIAL
 THE INFORMATION CONTAINED IN THIS DRAWING IS CONFIDENTIAL AND THE SOLE PROPERTY OF TRU TECH SPECIALTY MOTORS. ANY REPRODUCTION IN PART OR AS A WHOLE WITHOUT THE WRITTEN PERMISSION OF TRU TECH SPECIALTY MOTORS IS PROHIBITED.

DATE	Revision	UNLESS OTHERWISE SPECIFIED:	<i>TruTech Specialty Motors</i>		
		DIMENSIONS: INCHES [Millimeters]	TITLE: HS057 Motor Class		
		TOLERANCES: ANGULAR: ±1/2° TWO PLACE DECIMAL ±.01 [.25] THREE PLACE DECIMAL ±.005 [.13]			
		Status: Approval	DRAWN	NAME	DATE
		Production Level: Prototype	CHECKED	Brandon	
		Reference Part No:	ENG APPR.		
		Project:	COMMENTS:		
			SIZE	Sub Assembly. NO.	REV
			B		PX
			SCALE: 1:1		SHEET 1 OF 1